



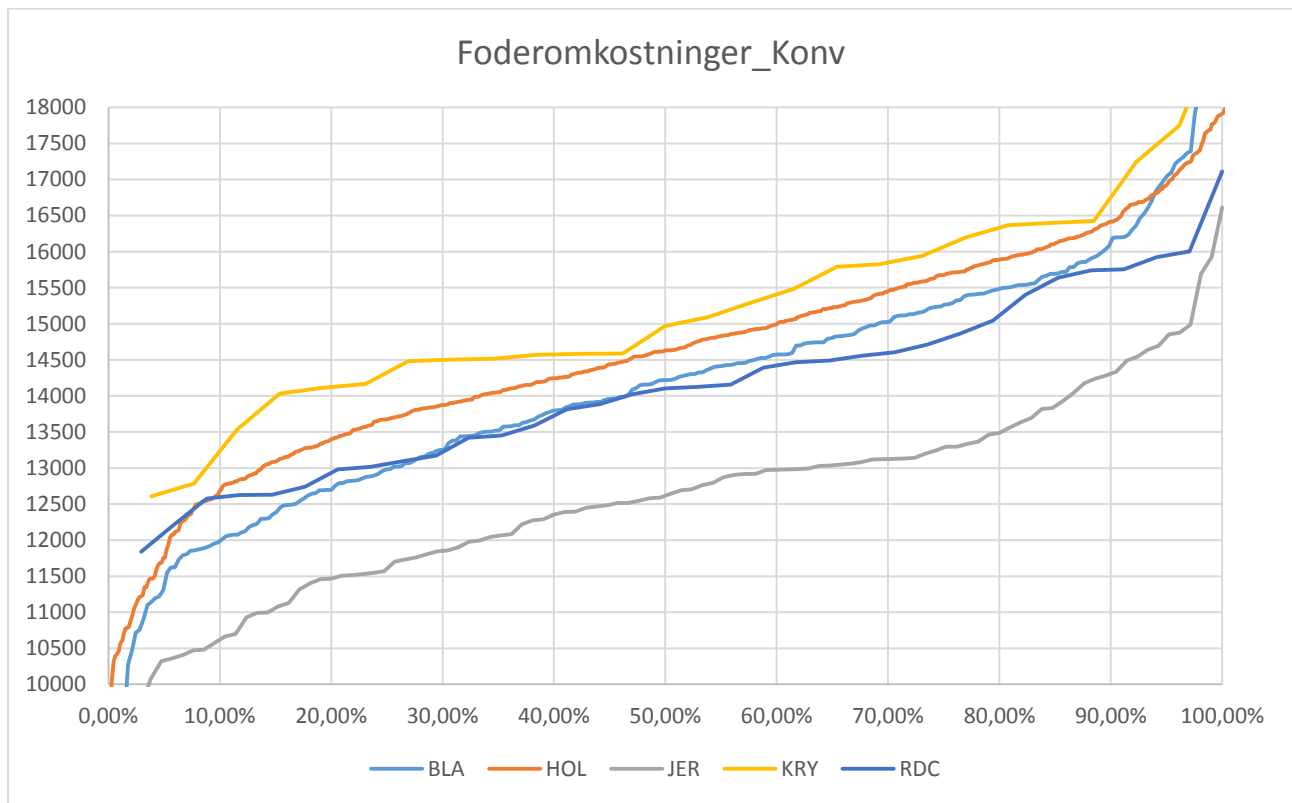
## Krydsningsbesætninger

Datasættet er dannet på baggrund af data i regnskabsdatabasen og "Listen fra Ane". Tabellen herunder viser hvor mange ejendomme vi har i datasættet delt på race, år og driftsform. For at sikre datakvaliteten i datasættet, skal ejendommene have et godkendt rengskab og være egnet til analyse, derudover skal ejendommen have lavet en produktionsgrensopgørelse. Ud over dette har vi filtreret outliers, taget på dækningsbidraget fra.

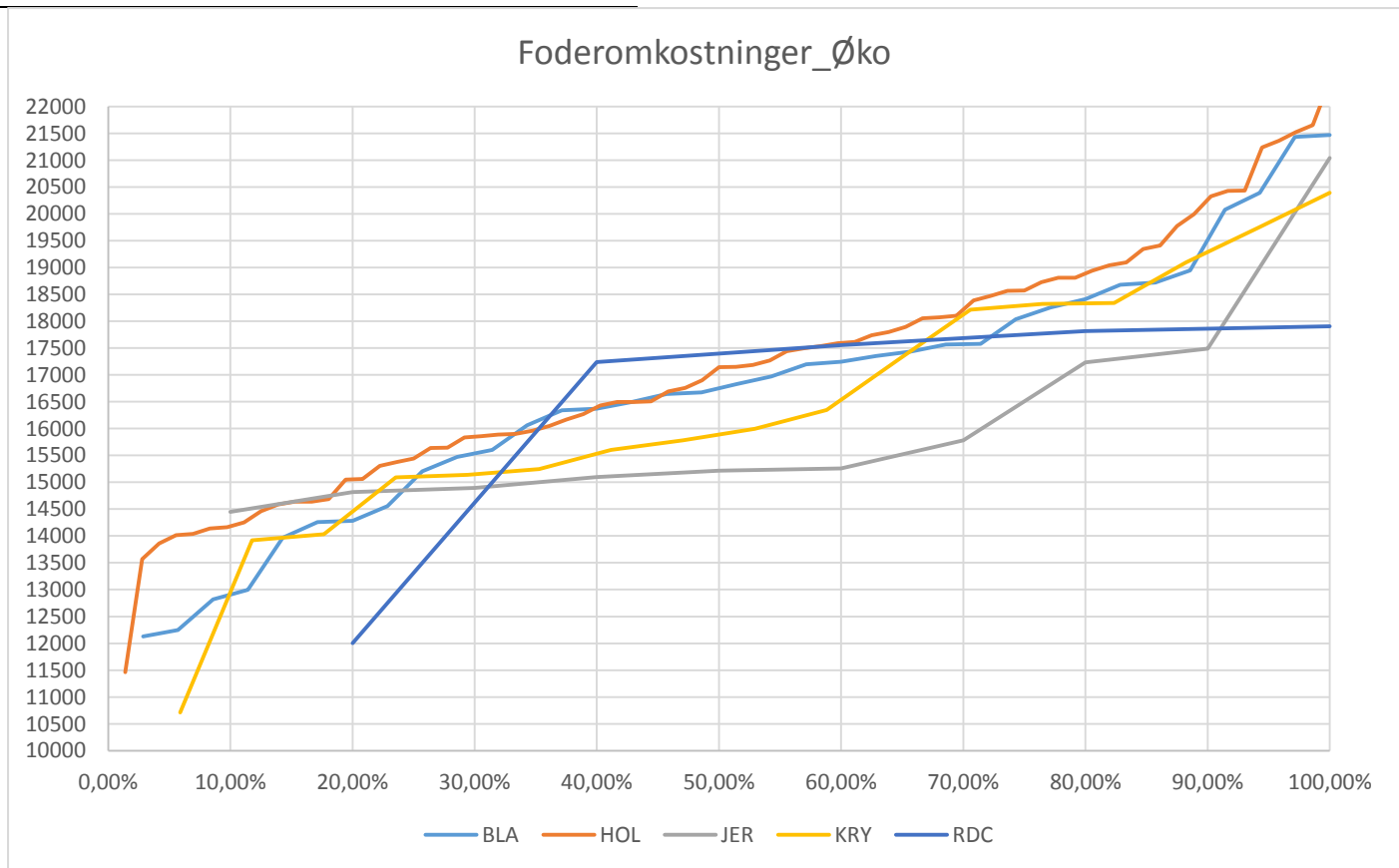
Antal af Ejendomsident Rækkenavne	RACE						Hovedtotal
	BLA	HOL	JER	KRY	RDC		
<b>2012</b>		<b>172</b>	<b>406</b>	<b>60</b>	<b>18</b>	<b>25</b>	<b>681</b>
Konventionel		155	377	56	11	24	623
Oekologisk		17	29	4	7	1	58
<b>2013</b>		<b>285</b>	<b>666</b>	<b>120</b>	<b>36</b>	<b>36</b>	<b>1143</b>
Konventionel		266	615	111	22	34	1048
Oekologisk		19	51	9	14	2	95
<b>2014</b>		<b>352</b>	<b>786</b>	<b>128</b>	<b>45</b>	<b>42</b>	<b>1353</b>
Konventionel		313	710	117	28	37	1205
Oekologisk		39	76	11	17	5	148
<b>Hovedtotal</b>		<b>809</b>	<b>1858</b>	<b>308</b>	<b>99</b>	<b>103</b>	<b>3177</b>

Graferne viser spredningen på udvalgte variable delt op efter race og driftsform(konventionel/økologisk) for 2014.

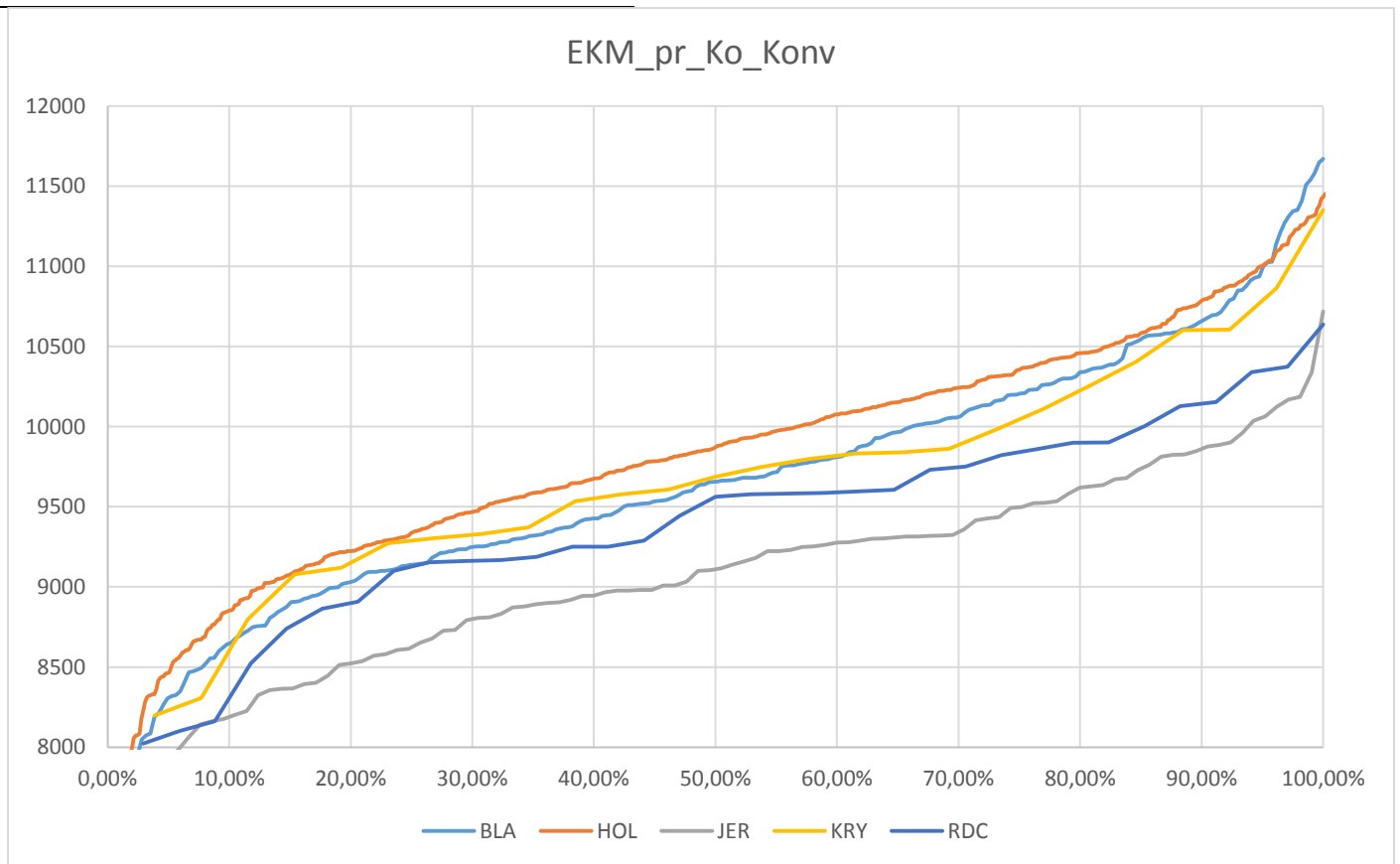
BLA	HOL	JER	KRY	RDC
GNS	GNS	GNS	GNS	GNS
<b>14.150</b>	<b>14.681</b>	<b>12.532</b>	<b>15.249</b>	<b>14.122</b>



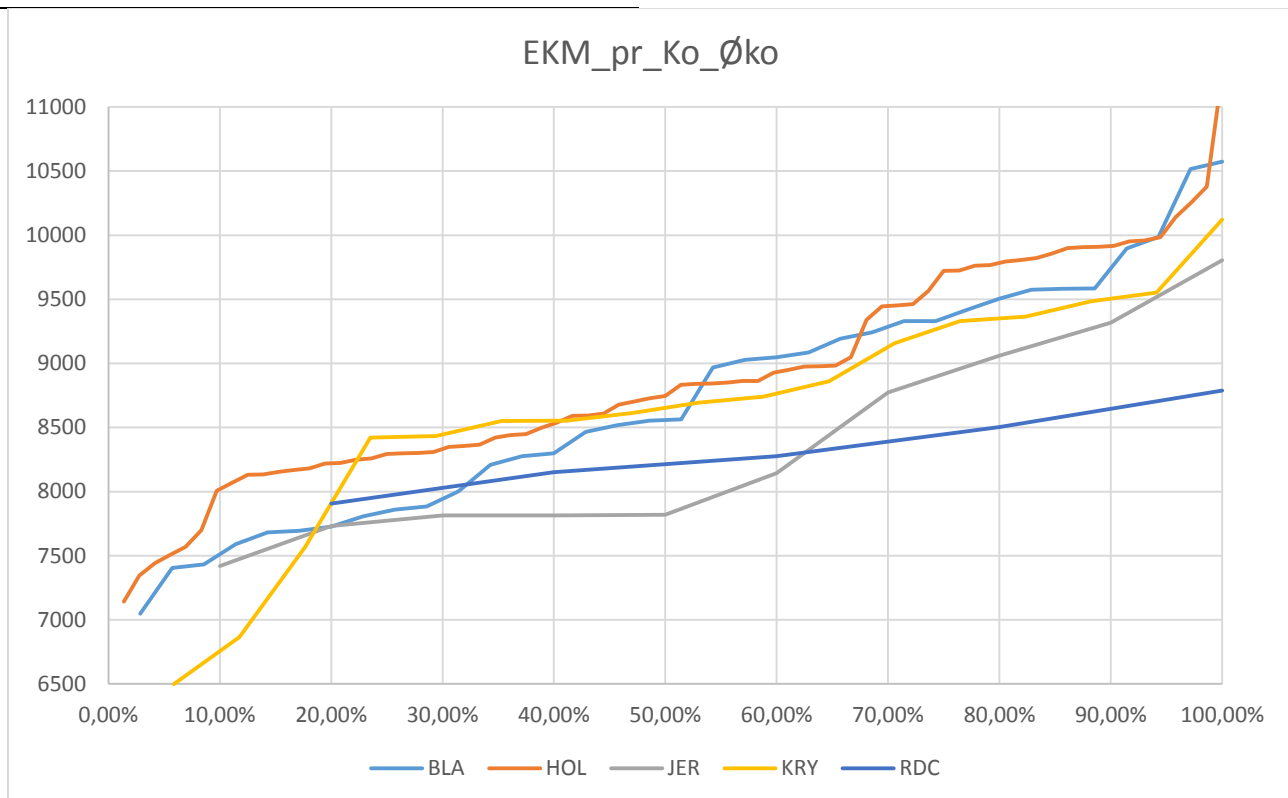
BLA	HOL	JER	KRY	RDC
GNS	GNS	GNS	GNS	GNS
<b>16.706</b>	<b>17.135</b>	<b>16.128</b>	<b>16.427</b>	<b>16.504</b>



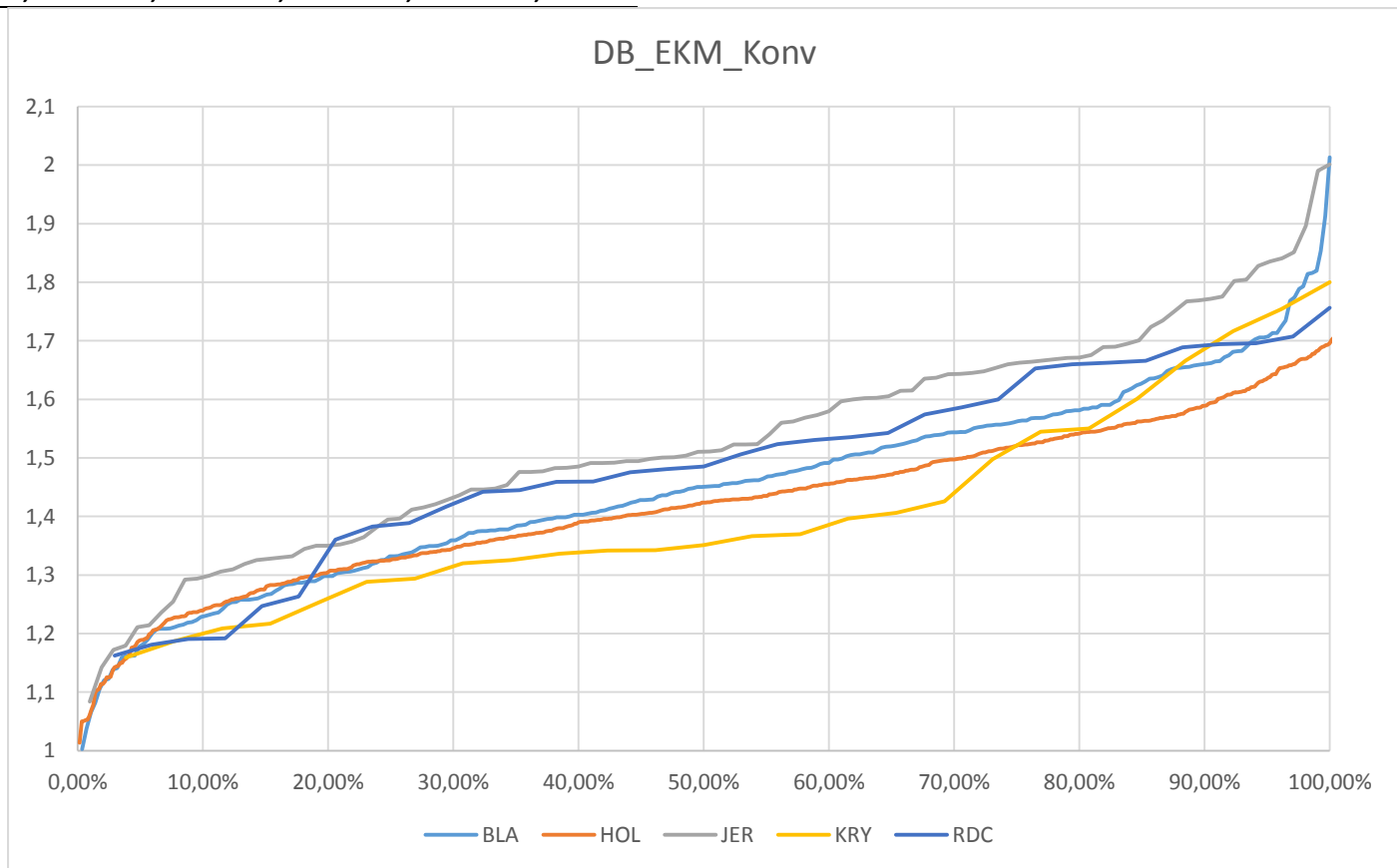
BLA	HOL	JER	KRY	RDC
GNS	GNS	GNS	GNS	GNS
<b>9.650</b>	<b>9.873</b>	<b>9.080</b>	<b>9.709</b>	<b>9.425</b>



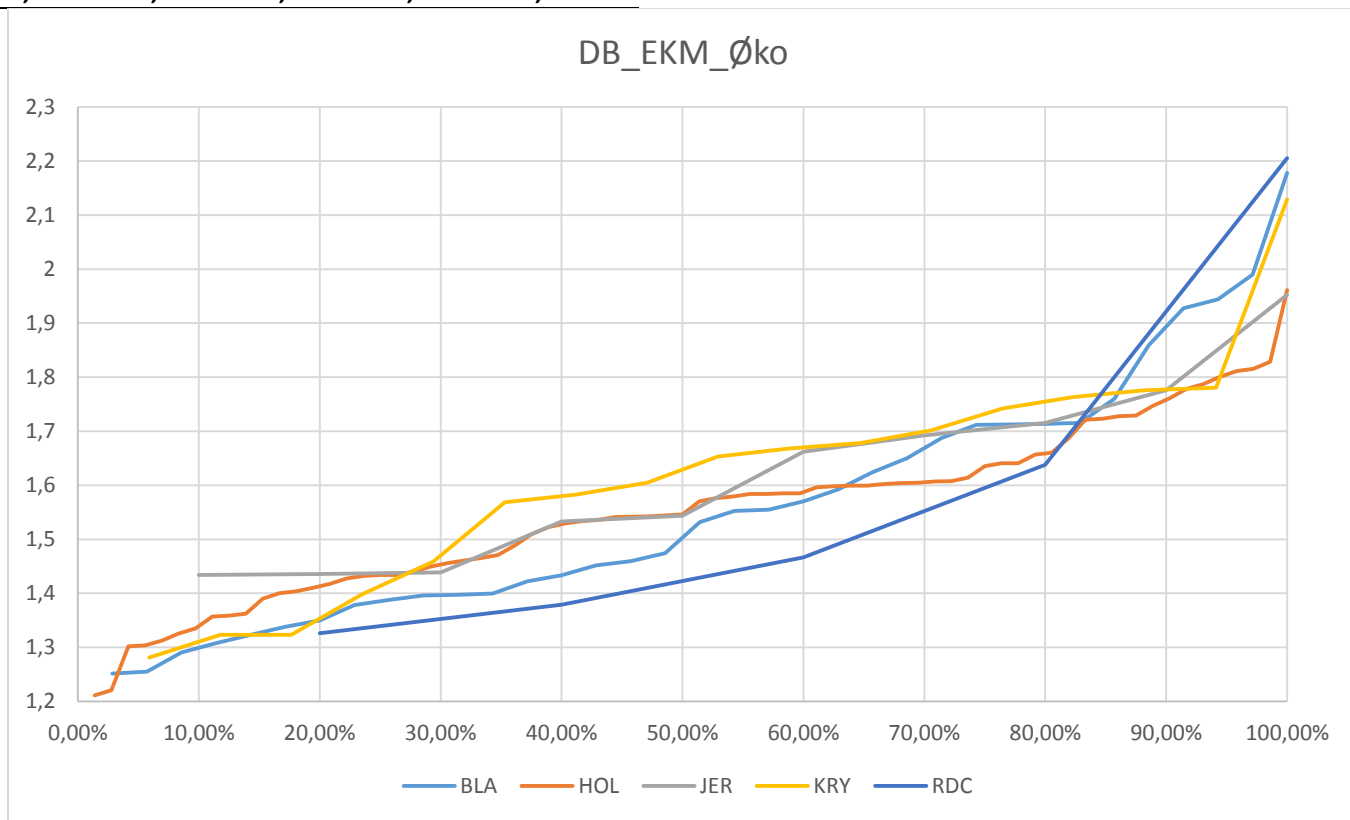
BLA	HOL	JER	KRY	RDC
GNS	GNS	GNS	GNS	GNS
<b>8.711</b>	<b>8.886</b>	<b>8.370</b>	<b>8.636</b>	<b>8.325</b>



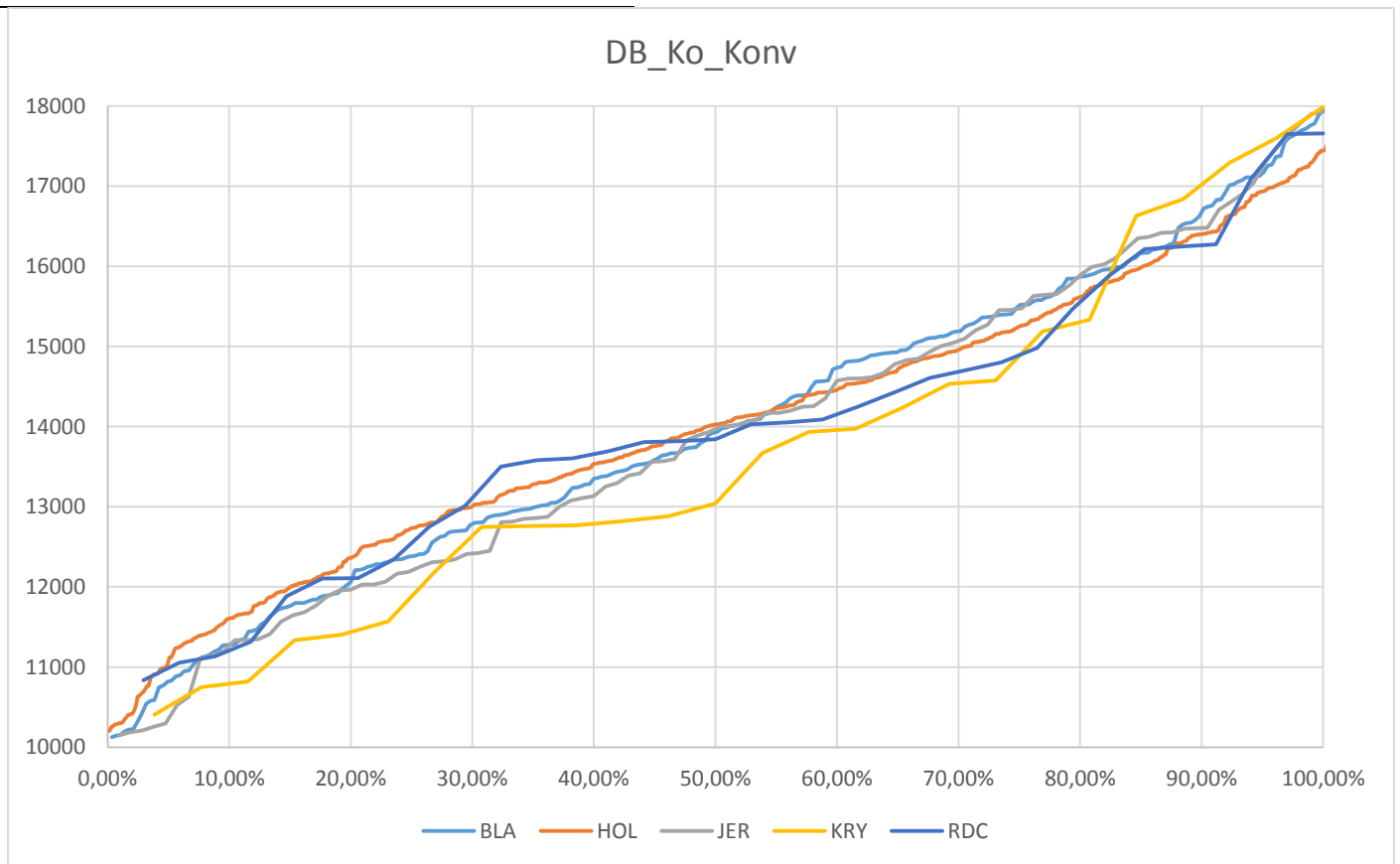
BLA	HOL	JER	KRY	RDC
GNS	GNS	GNS	GNS	GNS
<b>1,45</b>	<b>1,43</b>	<b>1,53</b>	<b>1,41</b>	<b>1,49</b>



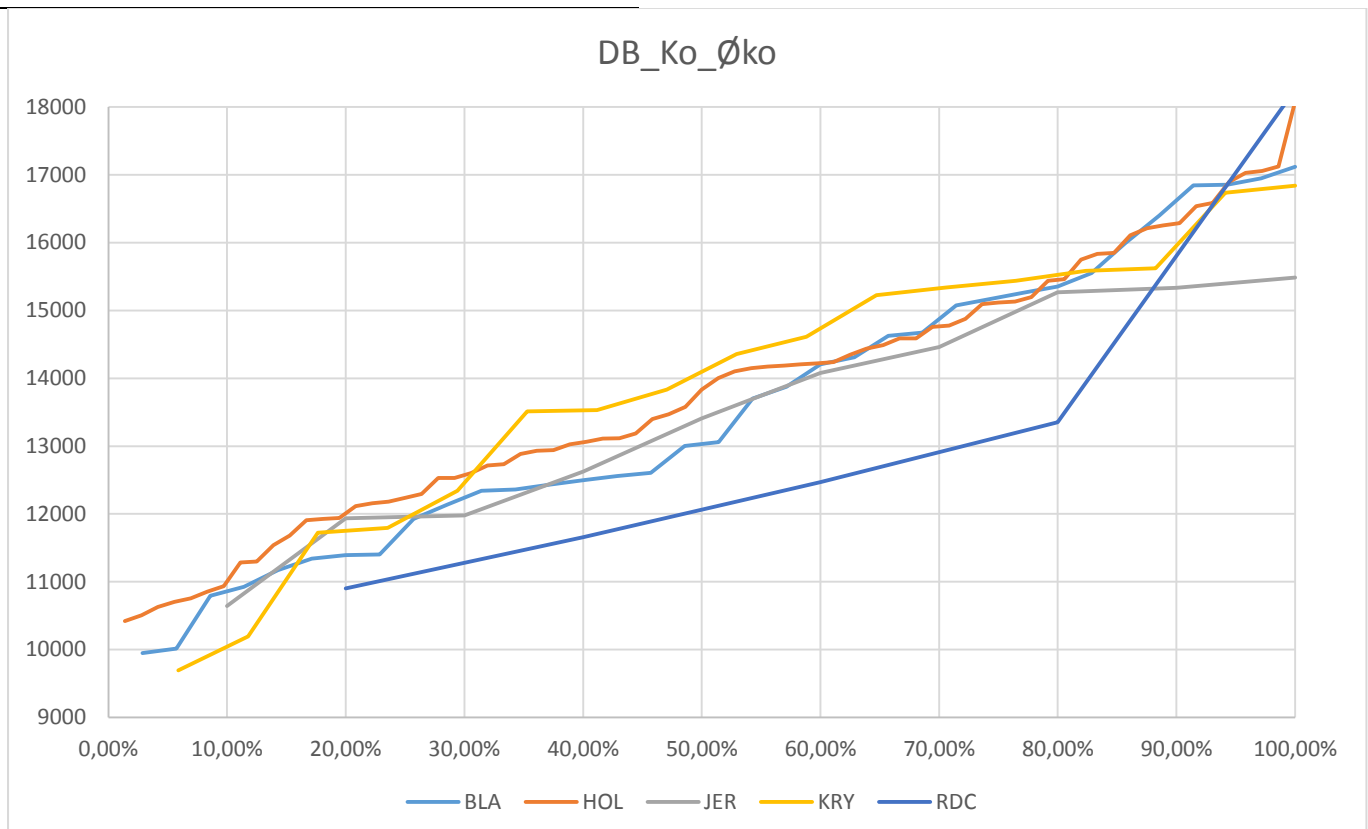
BLA	HOL	JER	KRY	RDC
GNS	GNS	GNS	GNS	GNS
<b>1,56</b>	<b>1,55</b>	<b>1,62</b>	<b>1,61</b>	<b>1,60</b>



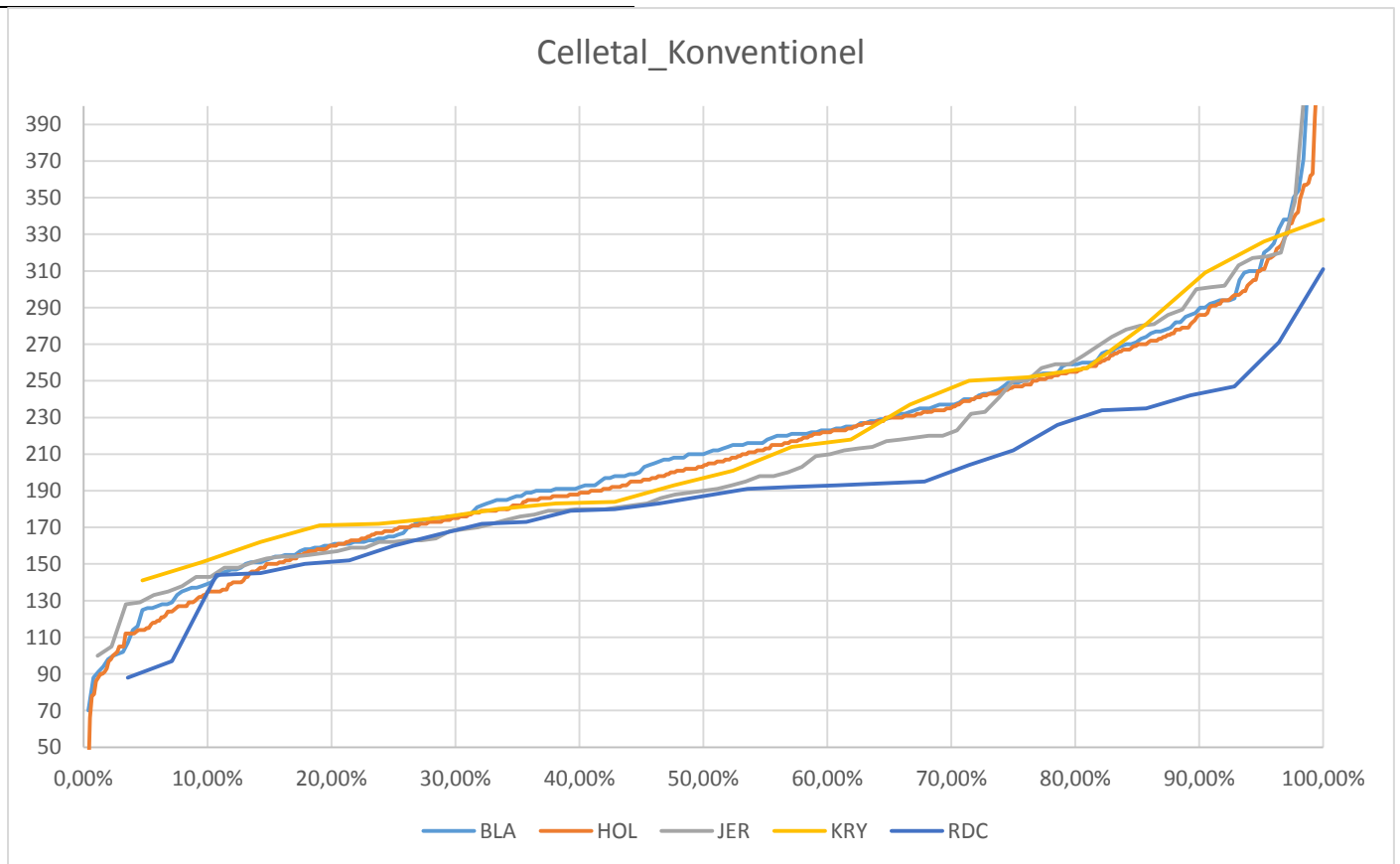
BLA	HOL	JER	KRY	RDC
GNS	GNS	GNS	GNS	GNS
<b>13.980</b>	<b>14.084</b>	<b>13.907</b>	<b>13.742</b>	<b>14.025</b>



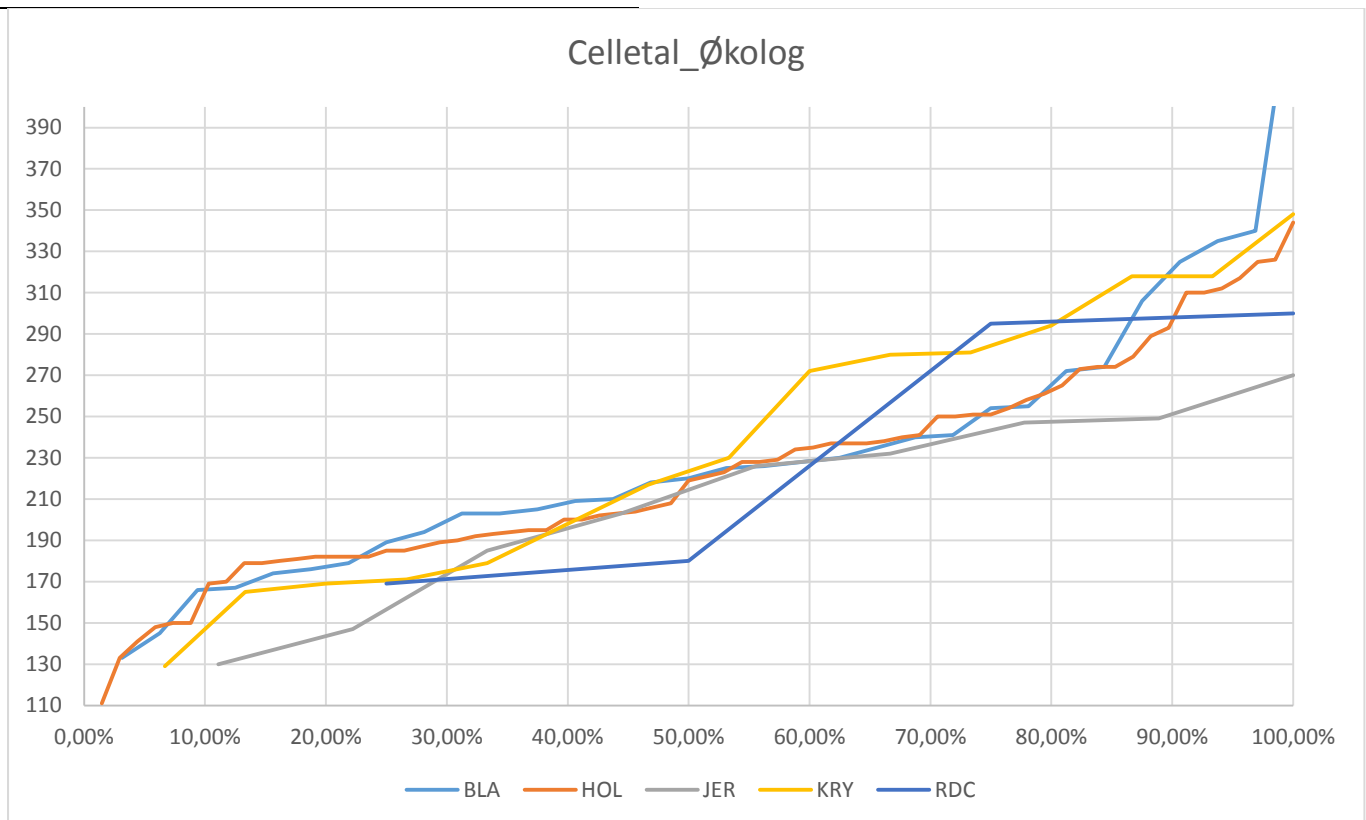
BLA	HOL	JER	KRY	RDC
GNS	GNS	GNS	GNS	GNS
<b>13.539</b>	<b>13.780</b>	<b>13.520</b>	<b>13.905</b>	<b>13.326</b>



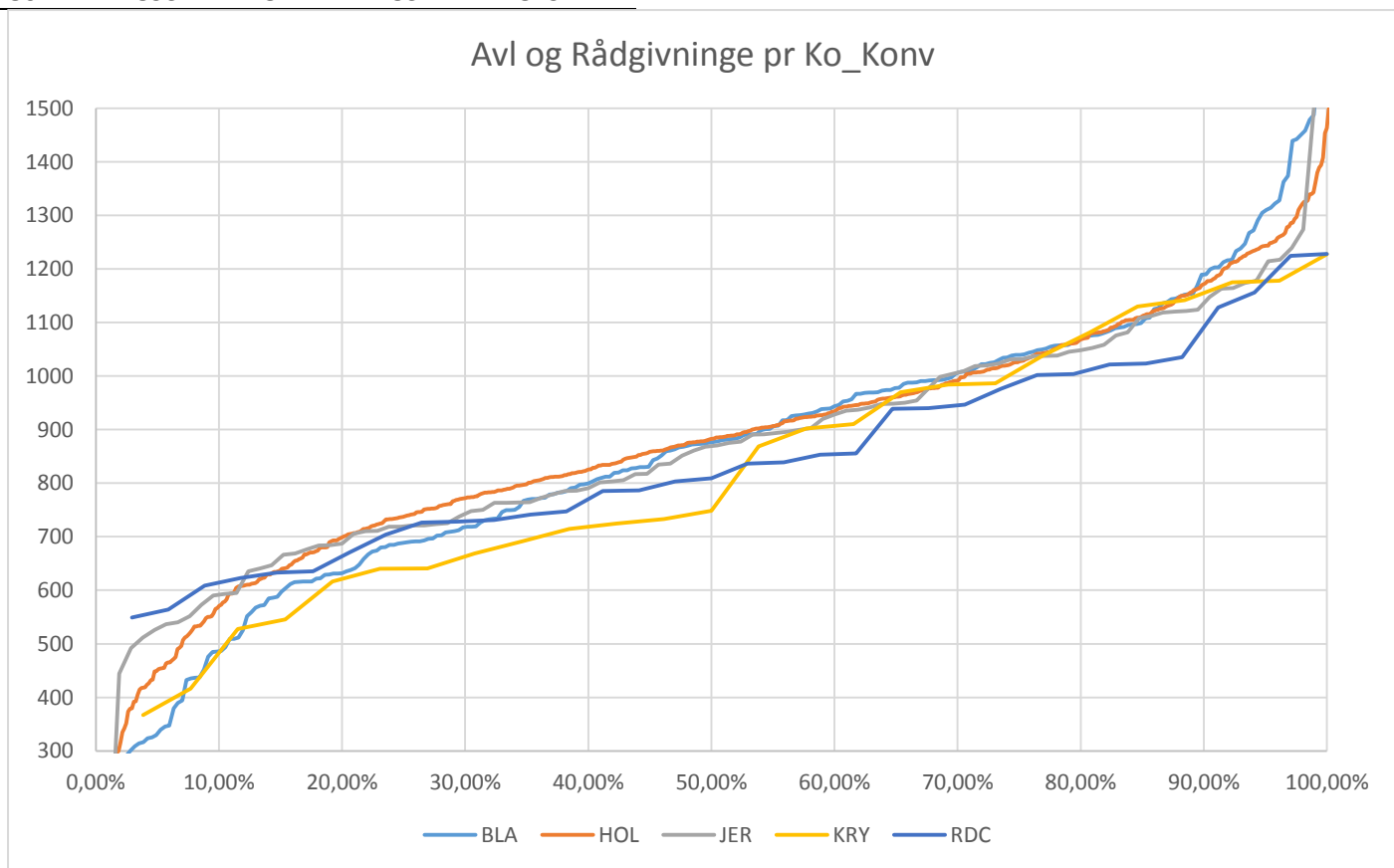
BLA	HOL	JER	KRY	RDC
GNS	GNS	GNS	GNS	GNS
<b>214</b>	<b>209</b>	<b>209</b>	<b>219</b>	<b>190</b>



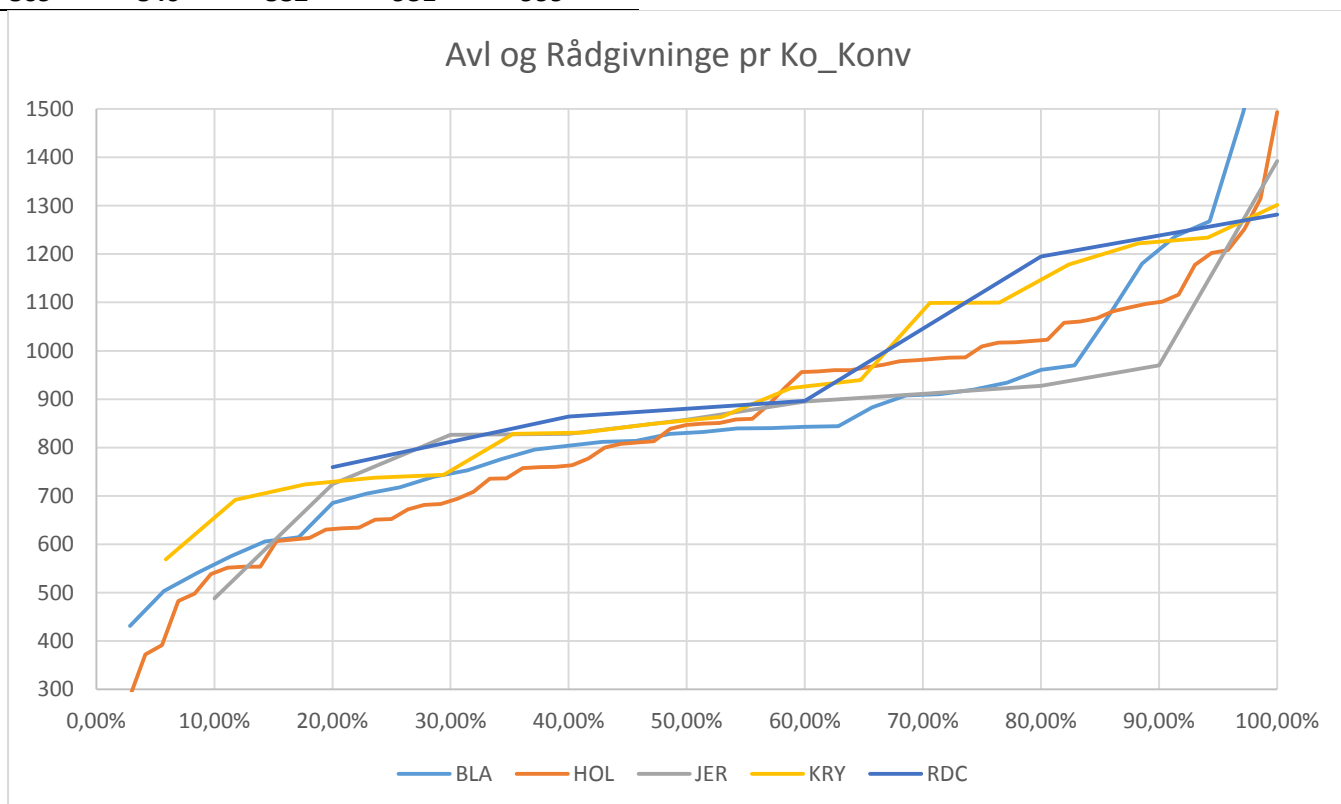
BLA	HOL	JER	KRY	RDC
GNS	GNS	GNS	GNS	GNS
<b>233</b>	<b>223</b>	<b>210</b>	<b>238</b>	<b>236</b>



BLA	HOL	JER	KRY	RDC
GNS	GNS	GNS	GNS	GNS
<b>861</b>	<b>893</b>	<b>872</b>	<b>832</b>	<b>849</b>

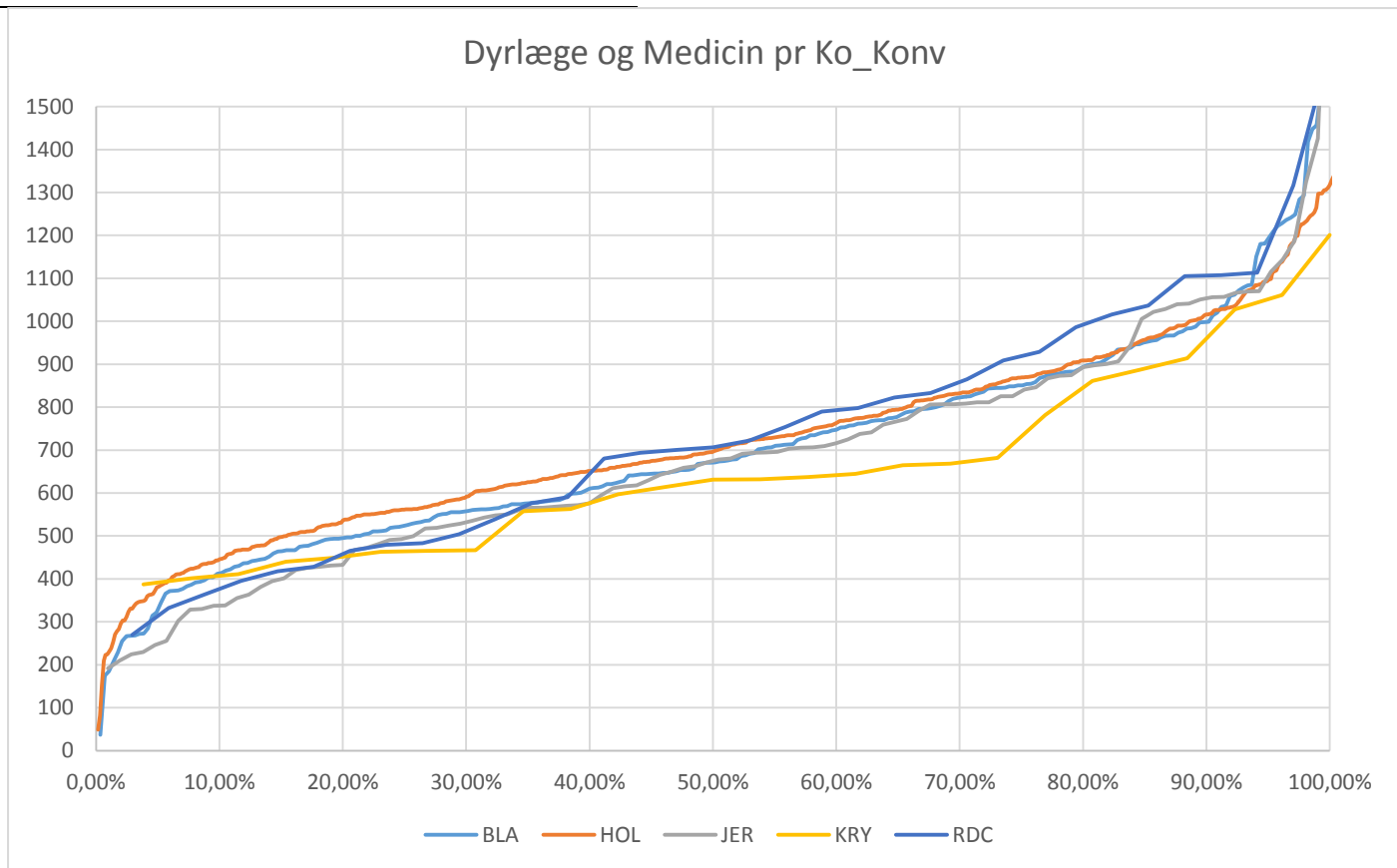


BLA	HOL	JER	KRY	RDC
GNS	GNS	GNS	GNS	GNS
<b>869</b>	<b>840</b>	<b>882</b>	<b>931</b>	<b>999</b>





BLA	HOL	JER	KRY	RDC
GNS	GNS	GNS	GNS	GNS
<b>705</b>	<b>740</b>	<b>692</b>	<b>658</b>	<b>746</b>



BLA	HOL	JER	KRY	RDC
GNS	GNS	GNS	GNS	GNS
<b>684</b>	<b>724</b>	<b>657</b>	<b>710</b>	<b>729</b>

